

Updates from the Office of Institutional Research and Effectiveness

In this issue:

- Assessment Spotlight
- Note from the AVP
- Fall 2021 Data
- Info. Graphic
- External Reporting Update
- Important Assessment Dates
- Excel Tip of the Month

Assessment Spotlight

SMART reports were due 10/15. Is yours ready to be showcased for our next reaccreditation? SMART reports for *FY21*, *FY22*, and *FY23* will be included in our next review.

Does your FY21 report accomplish the following?

Note from the AVP

Our office is in the process of updating our website—irout.gcsu.edu—with the newly released Fall 2021 data. If you are unable to answer your questions using the multitude of data available on our website, please email ir@gcsu.edu with your request. Feel free to be as thorough as possible!



Your results align clearly with measures and targets



Outcome of results (met, not met, exceeded) match the results presented



Results are analyzed, and notable or unusual findings are discussed



Action plans/"next steps" are tied to results and are specific and actionable



Closing the loop from the previous year's next steps discusses impact for each outcome



When possible, documents are uploaded to support assessment methods or results



Your assessment story is clear. Any reader/reviewer can follow and understand.

Fall 2021 Data

Total Enrollment: 6,763

5,586 Undergraduate students | 1,177 Graduate students

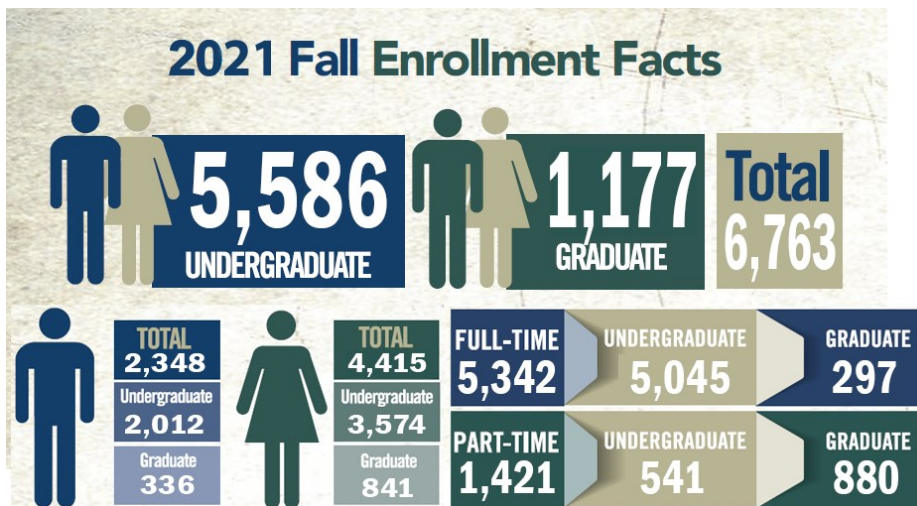
2020 One Year Retention: 77.98%

2017 Four Year Graduation: 50.31% | 2015 Six Year Graduation: 62.05%

| First-time Freshman Characteristics | |
|---|-------|
| Race/Ethnicity/Gender | Count |
| White | 1,215 |
| Hispanic or Latino | 92 |
| Unknown | 78 |
| Black or African American | 49 |
| Two or more races | 36 |
| Asian | 32 |
| Native Hawaiian or Other Pacific Islander | 3 |
| American Indian or Alaskan Native | 2 |
| Female | 1,004 |
| Male | 503 |
| Total First-time Freshman | 1,507 |

| Top 10 Undergraduate Majors Fall 2021 | | |
|---------------------------------------|-------|--------------------------------|
| Rank | Count | Major |
| 1 | 475 | Marketing |
| 2 | 451 | Psychology |
| 3 | 421 | Undeclared: Nursing Track |
| 4 | 366 | Management |
| 5 | 360 | Undeclared: Business Track |
| 6 | 354 | Exercise Science |
| 7 | 338 | Biology |
| 8 | 288 | Mass Communication |
| 9 | 238 | Management Information Systems |
| 10 | 222 | Nursing |

| Total Enrollment by Class | |
|---------------------------|-------|
| Class Level | Count |
| Dual Enrollment | 72 |
| Freshman | 1,673 |
| Sophomore | 1,232 |
| Junior | 1,240 |
| Senior | 1,346 |
| Other Undergraduates | 23 |
| Masters | 980 |
| Education Specialist | 73 |
| Doctoral | 45 |
| Other Graduates | 79 |



Please feel free to use the graphic to the left (also on our website— irout.gcsu.edu) when presenting a summary of GC to students, colleagues, at conferences, or to prospective students/faculty/staff.

External Reporting Update

Our office is in the process of submitting data to the following organizations for external reporting purposes:

- GS/GRE Survey of Graduate Enrollment
- NSF Graduate Students in Science & Engineering

Important Assessment Due Dates

- APRs: July 31, 2021 (past due)
- SMART Reports: October 15, 2021 (past due)
- Progress & Planning: November 30, 2021
- Core Assessment, Fall 2021: December 17, 2021
- CPRs: April 30, 2022
- Core Assessment, Spring 2022: May 20, 2022

Contact us at
ir@gcsu.edu

Excel Tip of the Month

Line Breaks with Text

Despite Excel's many capabilities, the simple task of typing in and formatting spreadsheet cells can be frustrating since text defaults to continuing in one line. Luckily that is easily fixed by holding down Alt+Enter on a PC and holding Control and Option while pressing the Return key on a Mac to create a new line as you type. You can also click "Wrap text" in the top menu to have the text automatically wrap at the edge of the cell you're in, and adjust as you resize the column or row.