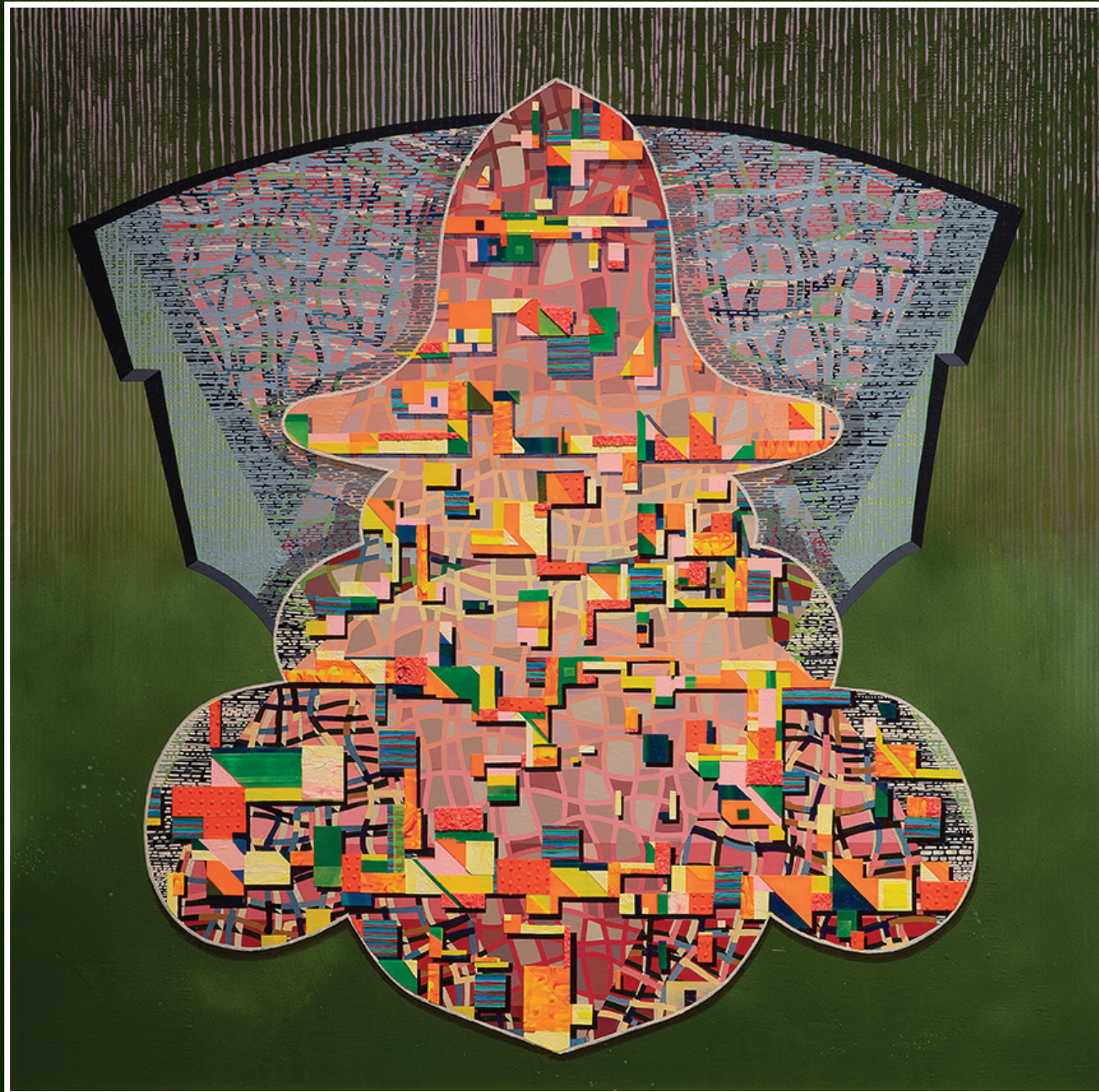


# THE MONUMENTS PROJECT

**JULIA MORRISROE**

Professor of Painting and Drawing at the University of Florida



▲ Monuments Project, Mississippi #12

## JAN. 13 - FEB. 6, 2025

A reception will be held on Wednesday, Feb. 5, 2025  
from 5-7 p.m. with an artist talk at 5.30 p.m. in Leland Gallery.

Funding provided by the Mamie Padgett Foundation.

**Dorothy Leland Gallery | Ennis Hall**

GCSU Department of Art  
320 W. Hancock St., Milledgeville, GA 31061  
[www.gcsu.edu/art](http://www.gcsu.edu/art)  
For more information, call 478-445-4572

**Gallery Hours:**

Monday, Wednesday, Friday — 10 a.m. to 4:30 p.m.  
Tuesday and Thursday — 1 to 4 p.m.



**DEPARTMENT OF ART**

GEORGIA COLLEGE & STATE UNIVERSITY